

MONARTO
ZOO



CHIMPANZEES SECONDARY



Government of South Australia

Department for Education and
Child Development

Acknowledgements

This resource was developed by:
Ruth Hall, DECD, seconded to Zoos SA Education

With support from the following people and organisations:
Ian Walton, DECD, seconded to Zoos SA Education
John Gardner, Angela Fewster, Emma Still, Jessica Langley & Carolyn
Hoare: Staff at Zoos SA Education

Front cover designed by:
Emma Still, Education Officer, Zoos SA

This publication is protected by copyright. It may be reproduced by South Australian teachers for use with their students. For all other uses contact Monarto Education

All images in the booklet are copyright of the Royal Zoological Society of South Australia.

© 2007 The Royal Zoological Society of South Australia and the Department for Education and Child Development, South Australia
Updated Nov 2011

This Education program for schools is a partnership between the Monarto Zoo and the Department for Education and Child Development, South Australia.

Monarto Education contact details

Phone: 85344100

Fax: 8534 4077

Email: iwalton@zoossa.com.au

estill@zoossa.com.au

Website: www.zoossa.com.au

For the Teacher

General Information

Welcome to Monarto Zoo!

Monarto Zoo is a fantastic educational resource. It is a 1450 hectare open range zoo located on former farming land. Large tracts of remnant mallee scrub exist in the areas between animal enclosures, and this natural scrub is being extended annually through an on-going revegetation program which involves many community and school groups. A huge variety of native fauna roams freely in the scrub areas.

Monarto Zoo is involved in many animal conservation programs and these include both native and exotic species, with a heavy focus on threatened species from desert and arid habitats.

Experiencing Monarto Zoo and learning about animals, ecosystems and conservation can be undertaken via

- Observing and handling the huge range of prepared skins, bones and other animal biofacts at the Visitor Centre.
- A safari bus tour of animal enclosures with a commentary provided by a trained host (for groups of 22 or more students in your own bus),
- Walking through the mallee scrub on signposted tracks,
- Taking as much time as you want to observe animals from viewing platforms around the Visitor Centre and at “Bus Stops”.

The Activity in this resource relates only to the Chimpanzees. Students are encouraged to use good observation skills and to read the signage on the viewing platform. Being quiet and non-confrontational when observing the Chimpanzees is important for their welfare. If they are able to meet the keeper, they should listen carefully and ask questions to learn more about these amazing animals and how they are cared for in captivity.

In planning this excursion, please consider your schedule and how you would like to arrange the class' activities on the day. Discuss this with the Education Officer at the time of booking your visit.

Estimated time to complete the Chimpanzee Activities: 20 minutes

Key:



Observe carefully



Discuss and share ideas with your group



Write down your thoughts



Did you know?

MONARTO ZOO



1
2
3
4
5
6
7
8
9
10
11
12
13
14
15
16
17
18

A B C D E F G H I J K L M N O P Q R S T U V W X Y Z

To Gate House
2.5 km

Alfred James
Memorial

Visitor's Centre

Mallee Fowl Track

Creek Track

The Bomas

Boma Track

Windana

Bretag Scrub
Future
release site
for native
animals

Chimpanzee

Ridge Track

The Waterhole

J10	Addax		M11	Giraffe	
R4	African Lion		K13	Indian Antelope	
R2	African Painted Dog		E11	Meerkat	
K11	Barbary Sheep		J14	Mesopotamian Fallow Deer	
D17	Bison		G11	Ostrich	
H14	Black Rhinoceros		E13	Przewalski's Horse	
K13	Bongo		H11	Scimitar-horned Oryx	
L5	Cheetah		Q3	Spotted Hyaena	
G12	Chimpanzee		M6	White Rhinoceros	
J13	Chital Deer		F12	Yellow-footed Rock-wallaby	
N9	Eland		I14	Zebra	

Legend

	Lookout
	Bus Stop
	Car Park
	Toilets
	First Aid
	Cafe
	Zu-loop route
	Walking Tracks
	Creek



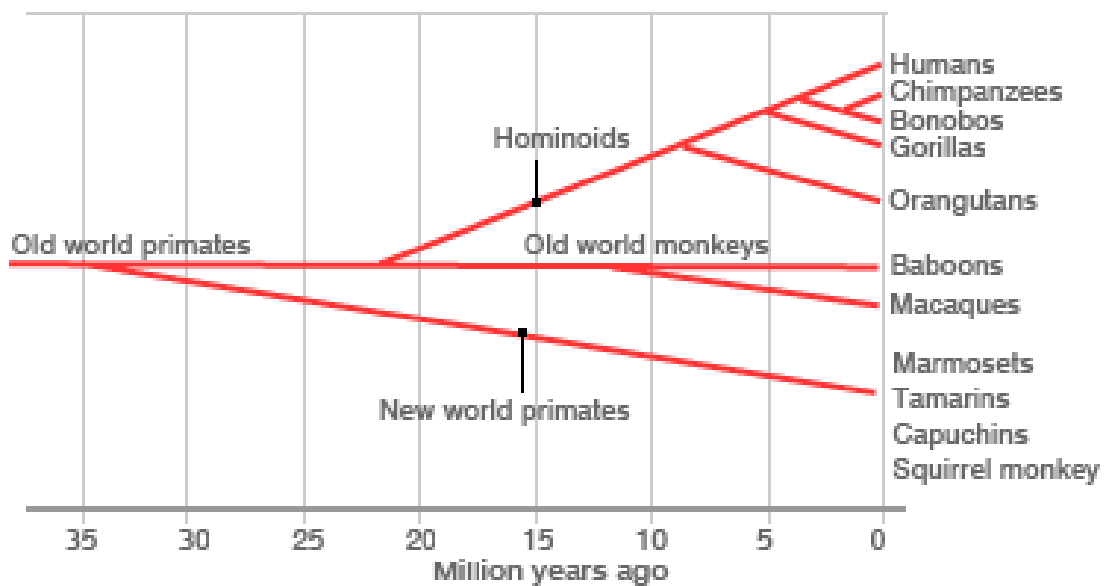
Monarto Zoo is smoke free.

CHIMPANZEE ACTIVITIES - SECONDARY



- 👁️ Chimpanzees are “Great Apes”. Look at the evolutionary tree below, which connects some species according to similarities in their DNA.

PRIMATE EVOLUTION TREE



SOURCE: Weatherall report

By studying DNA, it has been concluded that Chimpanzees and Bonobos are humans “closest living relatives”. Other closer relatives to humans are now all extinct.

- 👁️ Identify 5 differences and 5 similarities between humans and chimpanzees:

Similarities

Differences





Look at the arrangement of toes on the Chimpanzees' feet. Compare it to human toes.

Carefully draw a Chimpanzee foot and a human foot, showing how the toes are arranged in each.




"Each foot's structure shows adaptations which help the individual to move efficiently". Explain what this statement means.



The Chimpanzee enclosure, both the night quarters and the outdoor areas, have involved a lot of planning and input from many different types of workers to try to make it the best possible set up for the animals and the keepers working here.

Look at the different aspects of the enclosure and discuss this with other class members.

 List some of the different occupations of people who would have been involved in planning process.



Many of the features of the enclosure are designed to

- enrich the environment and behaviour of the Chimpanzees or
- prevent damage or escape by Chimpanzees or
- provide safe working conditions for the keepers or
- improve the visitor experience.

For each of these functions, identify 2 features of the enclosure which will assist.

Function	Features of the enclosure
Enrich the environment and behaviour of the Chimpanzees	<ul style="list-style-type: none">••
Prevent damage or escape by Chimpanzees	<ul style="list-style-type: none">••
Provide safe working conditions for the keepers	<ul style="list-style-type: none">••
Improve the visitor experience	<ul style="list-style-type: none">••





Quietly, and without staring, observe the behaviour of the Chimpanzees for at least five minutes.

Do ONE of these choices in the space below (circle the option you choose)

- Describe what you see
- Describe how you feel watching the Chimpanzees
- Draw something relevant to your observations
- Write some poetry or prose that your observations inspire



By reading the signage, identify some of the threats to the Chimpanzee species.

