

Children's University Learning Experience



1. When you have completed the activity in this booklet fill in your CU Passport with the date, for 1 hour with *chimpanzee observation* as the activity.
2. Take your CU Passport to the staff at the visitors desk and ask for a stamp.

Chimpanzee



If a staff member isn't available, take this sheet back to school and ask your CU coordinator to stamp your passport.

Scientists use research and field work skills such as *observation* to learn about animals.

Your name (name of observer) _____

Date:

Time:

Species of study animal: Chimpanzee

Does your chimp have any special colours or shapes (features)?

What is the weather like?

Sunny Cloudy Wet Still

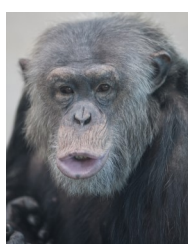
Hot Warm Cold Windy

Get started...

Can you identify the chimps?: Choose one to observe



Boyd



Tsotsie



Galatea



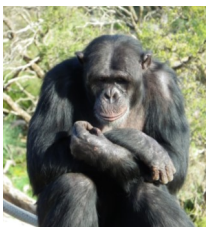
Zombie



Gombie



Zuri



Sandali



Enzi

1. Choose one chimp to watch.
2. Read the behaviour key and see what the code letter is for possible chimp behaviours.
3. Every 2 minutes write down what you see (observe) the chimp doing at that moment.
4. Repeat 10 times (until 20 minutes have passed).

LOCATION

I Inside
O Outside

WHERE

G On the ground
P On a platform
M Mezzanine
T In a tree
R On a rope

BEHAVIOUR

L Laying down
W Walking
R Running
S Sitting
C Climbing
V Vocalising
B Being carried
O Other

ACTIVITY

G Grooming
T Tool use
W Watching
B Making a bed
I Interacting with items
E Eating or drinking
P Playing
S Sleeping
O Other

INTERACTION

Put a number from 0-8 stating how many other chimps your chimp is interacting with

Time Lapse 120 seconds	Location	Where	Behaviour	Activity	Interaction
Example 1	I	G	W	B	
Example 1	I	G	L	G	1
1					
2					
3					
4					
5					
6					
7					
8					
9					
10					

When you have completed an animal observations you can take your passport to the Monarto Tour Desk and get a 1 hour credit stamped in your Children's University Passport

Choose another animal observation activity for more credits in your Children's University Passport



Extension work if you choose...

You have gathered some interesting information about chimps. Can you turn your data into a graph? Present your data in different types of graphs.

Can you think of reasons the chimp enclosure has been built like it has? Think about;

- Open space, rocks, trees, indoors, nests etc
- Any other things you notice
- Why are chimps threatened in the wild?
- What can people do to save chimps from extinction?

