

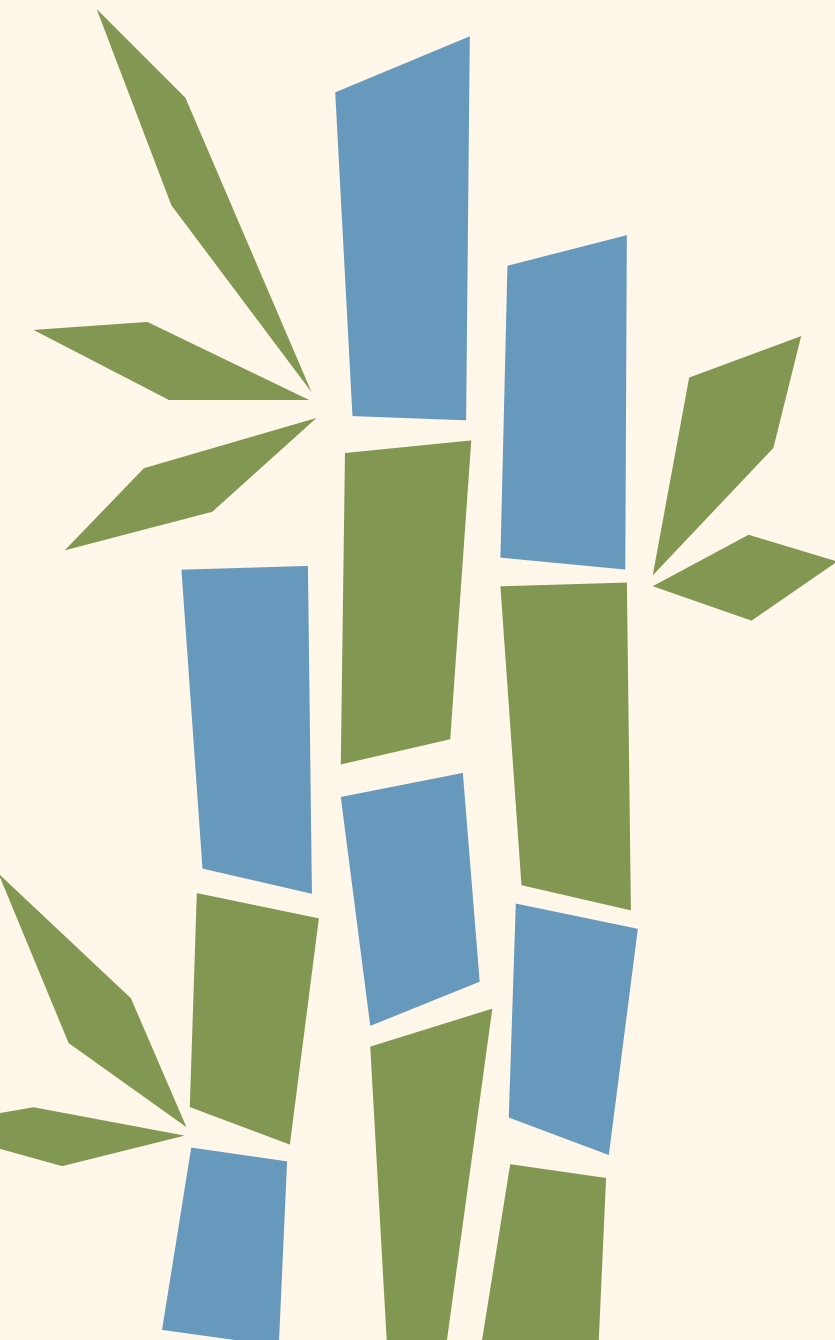
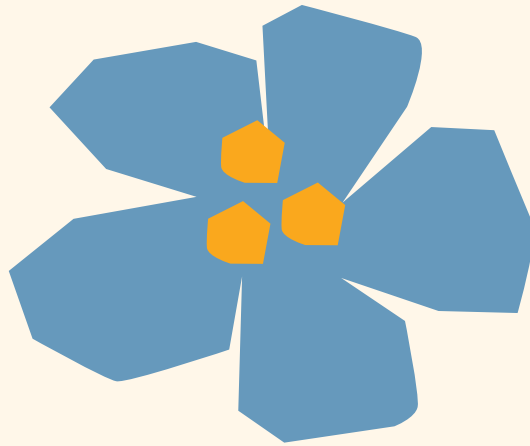
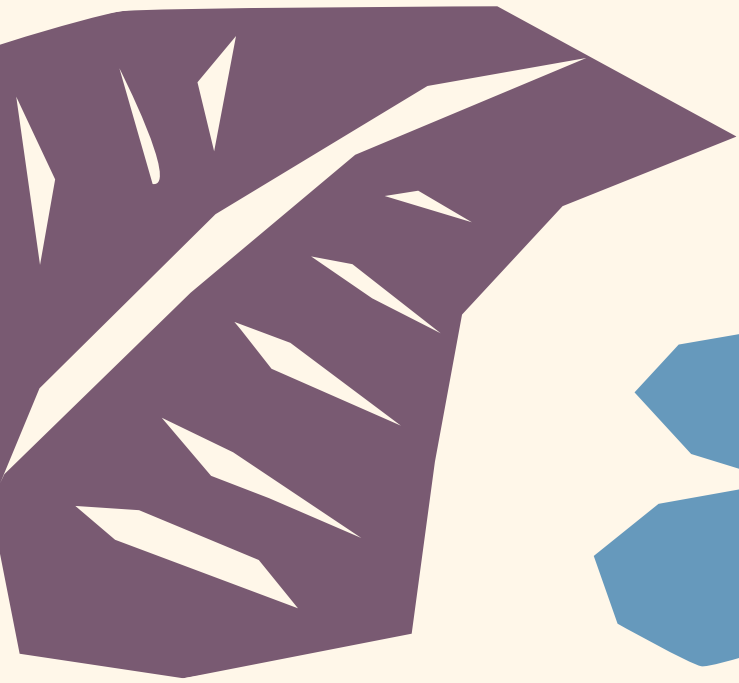


Adelaide Zoo

Master Plan addendum

2023

Zoos SA is a charitable conservation society that exists to connect people with nature and save species from extinction.





Adelaide Zoo addendum

Zoos South Australia's 20-year Master Plan released in February 2015 outlined forward infrastructure plans for both Adelaide Zoo and Monarto Safari Park. The document was intended to guide our evolution and prepare us for the years ahead, offering our visitors an experience that is easy to access, fun, friendly and meaningful, helping us lead the way when it comes to animal welfare standards, enhance our species conservation efforts, and ensure even greater impact in our delivery. Our longer-term vision for Adelaide Zoo remains unchanged, with developments intended to reflect a vibrant city oasis showcasing life's diversity, and offering visitors an accessible, intimate and rich experience.

Delivery to date

In late 2015, the first major development for Adelaide Zoo under the current Master Plan was completed, with the opening of our award-winning Nature's Playground. We are always looking for new experiences and innovative ways to engage people with nature, and this nature-based playground does just that. Jam-packed with loads of natural play elements for children of all ages to explore, including creek beds and an aerial walkway to give children a tree-top view of the zoo, the playground is the perfect way to introduce young people to the natural world, give parents a chance to catch their breath whilst enjoying a coffee at our Wisteria Café and is accessible for children of all abilities. The playground has proved a popular addition to Adelaide Zoo's exciting

line-up and has significantly impacted return visitation of families to the zoo with our increasingly engaged members reinforcing its appeal.

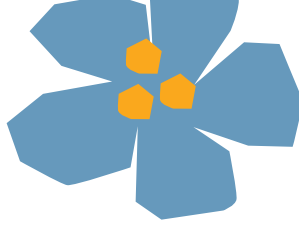
Less than four years later in September 2019, continuing our successful partnership with Variety SA, the Variety Children's Zoo was opened to the public. The new Children's Zoo provides an amazing space for children, filled with interactive areas, allowing them to get closer than ever to some of Adelaide Zoo's most popular animal residents. Complete with areas for children of all abilities to play and explore, some of the Variety Children's Zoo's key features include a rock wall, skywalk, balance beams and ladders for our charismatic goats, climbing branches for our friendly native mammals and a dedicated presentation area for keepers to share stories about their animal friends.

Other key achievements to date include:

- Into Africa - Stage 1 resulting in a doubling of space available to our giraffe, the construction of an all accessible interactive feed platform and the reopening of our historic elephant precinct that had been closed to visitors for nearly 30 years. Improved visitor facilities in Nature's Playground and the Variety Children's Zoo along with improved viewing and access to Seal Bay.
- Aussie Icons commenced with the delivery of the Variety Children's Zoo and development of a new Little Penguin habitat located adjacent to the front entrance.
- The construction of overhead tunnel systems expanding habitat and interaction opportunities for a range of our animals including Golden Lion Tamarin, Black-and-white Colobus and Red Panda.
- Completion of stage 1 of our Komodo Dragon habitat, facilitating the arrival of our new adult male Komodo Dragon.
- Improvement to the Animal Health Centre commenced, focussed on improving accessibility and quarantine holding.
- Existing conservation breeding facilities for Orange-bellied Parrot and Western Swamp Tortoises have been upgraded and expanded.
- ICT Learning Experiences: Sign language interface by QR code during Light Creatures.



Artist impression: (Top) African Village, (Bottom) Giraffe habitat promenade



Changes to Master Plan

Whilst our Master Plan initially outlined our intent to move our two giraffe to Monarto Safari Park, and develop a world-leading habitat for Lowland Gorilla, we have now significantly changed our intent for this space. Instead we aim to develop an amazing African Oasis habitat, focussing on giraffe remaining at Adelaide Zoo. This change was largely influenced by one of our tallest animal inhabitants, Kimya, our 18-year old giraffe. Following the unexpected passing of her sister, Kimya was left without a companion. Giraffes being a social animal need companionship, and it was therefore decided to move Kimya to Monarto Safari Park where companionship could be developed with other giraffe that reside there. However, Kimya refused to move from our site, so the only other option was for Kimya to remain at Adelaide Zoo and relocate a younger, hand reared giraffe from Monarto Safari Park to Adelaide to be Kimya's companion. This sparked the genesis of the African Oasis habitat which when completed will significantly increase the size of our giraffe habitat at Adelaide Zoo. Giraffe have been on public display at Adelaide Zoo for over 90 years, and are one of the most popular and iconic Megafauna species that a zoo can offer. Giraffe will now continue to be present for visitors at Adelaide Zoo long into the future and continue to stand tall in this precinct. The precinct will also showcase another unique species, with Pygmy Hippopotamus displayed in a habitat featuring underwater viewing, allowing visitors to experience their life underwater. We will also celebrate the history of our site, with further refurbishment of our historic Elephant House. Once completed, the new African Oasis development will provide one of the largest footprints for displaying giraffe in an inner city zoo

within Australia, and see other iconic African species including Nyala and Ostrich incorporated into the precinct. It will provide a new giraffe house, unique animal encounter opportunities for visitors, new visitor infrastructure with the construction of an African Village pavilion, and be viewable from outside the zoo along the banks of the River Torrens. Our central lawn precinct will also get an upgrade providing a wider range of use and accessibility options and support an expansion of the ever popular Free Flight presentation space.

In order to free up space for the African Oasis development and open views to the riverfront, we plan to build new facilities to house some of our most critical support functions including a new animal food store, horticultural nursery for cultivating plants and supporting the maintenance of our gardens and site wide plantings, an assets workshop for tools, equipment and fabrication, and office space and facilities for animal and conservation staff. This area will be located in the footprint of the old children's zoo towards the eastern boundary of our site.

We have also confirmed our vision of what our Aussie Icons precinct will look like, ensuring we continue to enhance the display of iconic Australian animals at Adelaide Zoo. This development will see the continued renewal of our front entrance precinct, with the construction of new spaces for Australian animals including Koala, Greater Bilby and Yellow-footed Rock-wallaby which has been part of the on-going conservation success of Adelaide Zoo. Works will see the continuation of our aerial boardwalk network, joining Natures Playground precinct with a new habitat space for Koala, Short-beaked Echidna and Bettongs. A slight change is proposed

to enhance this development, with our existing Panda Shop retail space to be refurbished as a modern nocturnal habitat display for the iconic Greater Bilby, providing a space to bring together and celebrate not only our amazing conservation achievements with this species, but also link with local indigenous culture and community.

The proposed location for an animal holding and breeding area under the original Master Plan is in the most eastern section of the site (current location of the old children's zoo). This is immediately adjacent to an area within Botanic Park that Adelaide Botanic Gardens increasingly uses for major events and concerts, and as such, is now considered unsuitable for the purpose of holding and breeding of conservation significant animals. In lieu, a conservation breeding centre has been developed at Monarto Safari Park and a small holding area near our current Animal Health Centre at Adelaide Zoo will be developed to support the sites native animal programs.

We have also reviewed what the future holding of big cat species will look like at Adelaide Zoo, with our focus to be Sumatran Tigers and African Lions. Reaffirming our conservation and breeding commitment to the critically endangered Sumatran Tiger, we plan to expand their habitat to include space currently home to our ageing African Lions Mujambi and Amani. We have also confirmed our intended design for a significantly larger, new lion habitat, that in the future will be home to a bachelor group of African Lions and support the breeding program at Monarto Safari Park. This space will complement the proposed African Oasis development, providing a unique walk through lion gorge experience for all visitors to our Adelaide site, along with additional function and

Future Plans 2035

undercover spaces. Our recent breeding success with Sumatran Tigers at Adelaide Zoo makes these plans even more important as we work in partnership with Zoos around the world to safeguard the future for a species which has less than 400 individuals remaining in the wild.

The recent commencement of constructing a new purpose built breeding and habitat facility for the remarkable Komodo Dragon near the zoos front entrance has also provided opportunity to review the primate collection in our Jewels of Asia precinct. In the longer term, this space will be redeveloped as a forest canopy trail for our Orangutans, Siamangs and White-cheeked Gibbons, providing a network of aerial skywalks and canopy climbers for our primates and unique interaction opportunities for visitors.

Artist impression: Lion gorge walkthrough

Next 5 years

The following projects are earmarked for development in 2023 and over the coming years.

- Completion of Komodo Dragon breeding and habitat facility near the front entrance.
- Commencing stage 1 of the Forest Canopy Trail, providing an aerial skywalk and canopy climbing structures for our two orangutans and viewing platform with new interaction opportunities for visitors.
- Relocate back of house infrastructure in the north west portion of the site to make this prime location available for development of the African Oasis.
- Expanding habitat for our Sumatran Tigers.
- Continue our Into Africa development - African Oasis and new African Lion habitat components.
- Infrastructure improvements to reduce our carbon footprint

- We remain committed to our Giant Panda conservation program, with our current agreement for Fu Ni and Wang Wang in place until the end of 2024. We will commence discussions with China and the Australian Government (Federal and State) to understand what a further extension may look like.

Beyond 5 years

Depending on funding availability we would be hopeful that some of these could be commenced earlier.

- Complete Into Africa Development.
- Aussie Icons – Koala, Greater Bilby and Yellow-footed Rock-wallaby component.
- Additional stages of the Jewels of Asia Forest Canopy Trail focusing on Siamang and White-cheeked Gibbons.
- Preliminary planning for Jungle Journey and Northern Tropics.
- Upgrade to the Central Lawn to improve Free Flight presentation area and provide enhanced, accessible and multi-weather appropriate visitor green space.



Adelaide Zoo

Into Africa

14,590m²

AFRICAN OASIS

GIRAFFE OSTRICH NYALA

ELEPHANT HOUSE

GIRAFFE HOUSE

VOLUNTEERS

GATEKEEPER'S HOUSE

TOILETS

FROME ROAD

Nature's Playground & Aussie Icons

5,300m²

BILBY

YELLOW FOOTED ROCK WALLABY

AUSSIE ICON ZONE

ECHIDNA BETTONG BANDICOOT WOMBAT KOALA

REPTILE HOUSE

NATURE'S PLAYGROUND

TOILETS

UNDERCOVER DINING

ENTRANCE BUILDING & RESTAURANT

SECURITY

PLANE TREE DRIVE CENTRE

PRAM & KIDS CAB STORE

INFO BOOTH

UNDERCOVER & OUTDOOR DINING

KIOSK

AVIARY

RED PANDA

GIANT PANDA

GIANT PANDA

PANDA BUILDING

GATE 1

GATE 2

BOTANIC DRIVE

Bamboo Forest

4,490m²

VIEWS TO RIVER

PYGMY HIPPO

LAWN

AFRICAN VILLAGE

TOILETS

AVIARY

ROTUNDA

FREE FLIGHT AND PELICANS

ENDANGERED AUS. WILDLIFE

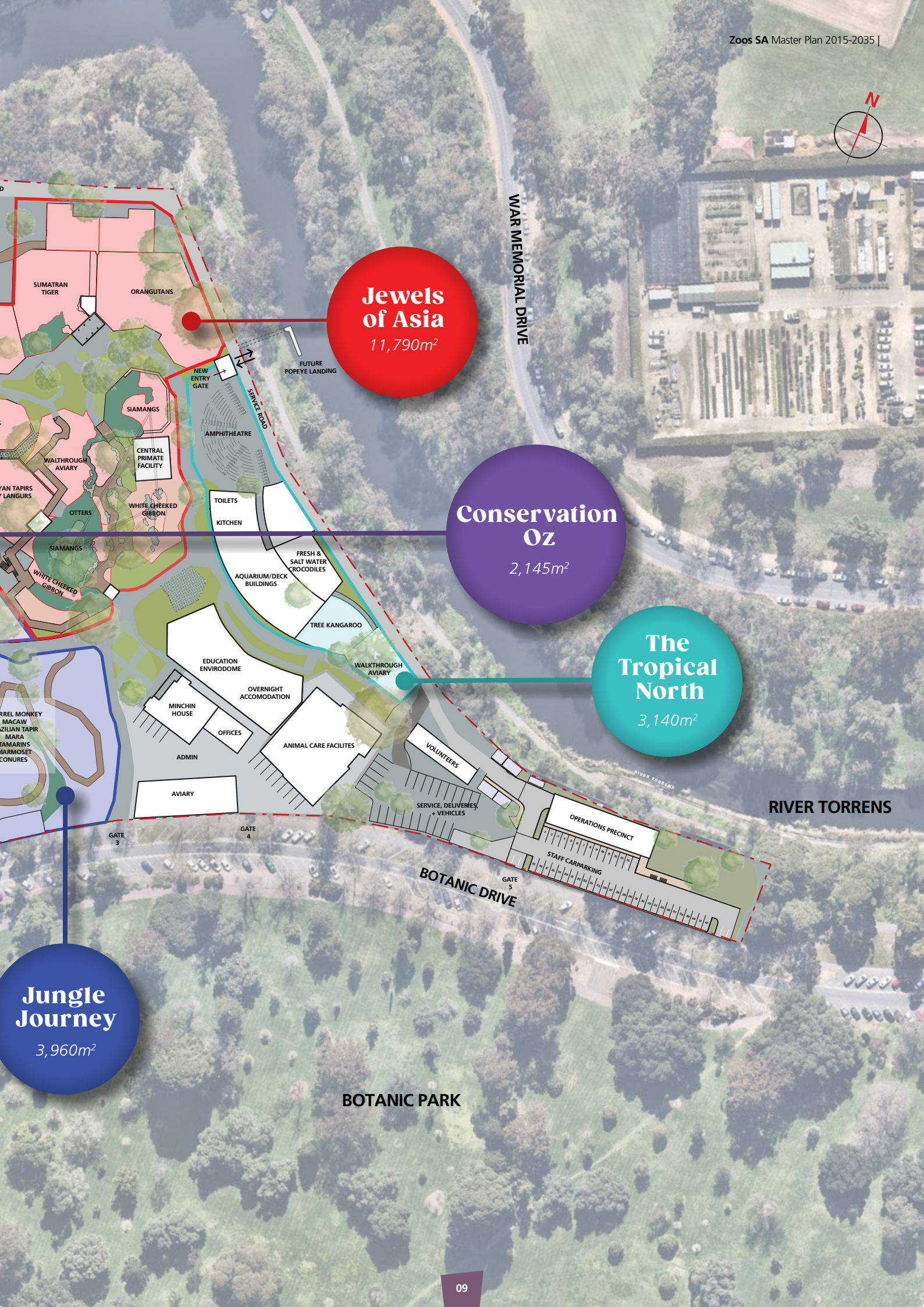
CASSOWARY

SQUIRREL

BRASS

T. M.

W. M.



Jewels of Asia

11,790m²

Conservation Oz

2,145m²

The Tropical North

3,140m²

Jungle Journey

3,960m²

WAR MEMORIAL DRIVE

RIVER TORRENS

BOTANIC DRIVE

BOTANIC PARK

ADELAIDE
ZOO

